

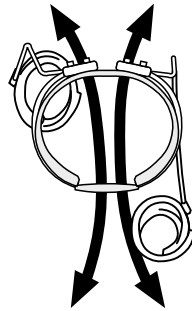
Hip



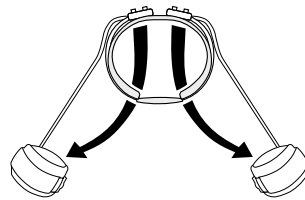
S.W.A.S.H.[®]

Increase Levels of Function

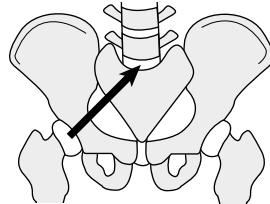
What makes SWASH unique to other hip orthoses is that it offers controlled variable abduction. It is engineered with a complex series of angles to maintain good hip alignment as the uprights follow the pathways of motion of the femurs.



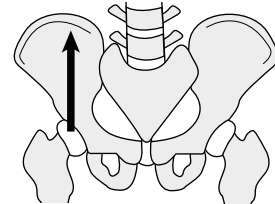
While standing or walking, SWASH provides just enough abduction to prevent scissoring and medial femoral rotation. As the hips are flexed to assume the sitting position, it automatically further abducts the hips to create a tripod base for enhanced sitting stability and more upright posture.



The most visible benefits of the SWASH are readily apparent by improvements in sitting and standing posture and stability, and for the ambulatory user, improvement in gait. However, perhaps the most important benefit the SWASH offers is guidance for hip alignment.



With



Without



S.W.A.S.H.™ Classic

- Plastic pelvic section extends from L2/L3 to the coccyx, providing maximum torso support for candidates with flaccidity or very limited trunk control
- Single strap fixed front closure to secure torso support
- Increased posterior and side support
- "Childproof" thigh cuff closure
- 6mm diameter uprights for size 1, 7mm uprights for size 2, 3, 4



S.W.A.S.H.™ Low Profile

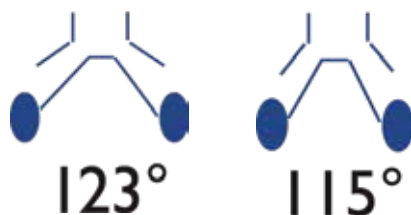
- Anatomically shaped metal pelvic section rests over the pelvis and is secured in position by attaching to a small plastic reinforced abdominal pad
- Double strap front closure allows symmetrical application
- 8 mm diameter uprights in all sizes - extra strong for extra high tone
- Interchangeable thigh cuff sizes
- Overlap design thigh cuff closure for easy application and removal
- Contoured posterior joints reduce interference with posterior walkers and other standing/walking/sitting aids



Two options for upright selection

More abduction in sitting

Increased abduction offers maximum opportunity for muscle lengthening in the sitting position, and is also recommended when there is need to influence the trunk toward more spinal extension.



Less abduction in sitting

Reduced abduction better accommodates wheelchairs with narrow seat structures and is better tolerated by children with tight adductor muscles.

Dimensions in inches	Pelvic Section Circumference	Thigh Cuffs Circumference	Upright Diameter	Upright Overall Length (waist to mid patella)	Upright Prox. Width	Distal Length
Classic SIZE 1	40 - 46,5 cm	21 - 25 cm	6 mm	31 cm	63 mm	175 mm
Classic SIZE 1A*		21 - 25 cm				
Classic SIZE 2	46 - 55 cm	25 - 29 cm	7 mm	37,5 cm	80 mm	215 mm
Classic SIZE 3	54 - 63 cm	29 - 33 cm	7 mm	44 cm	80 mm	280 mm
Classic SIZE 4	62 - 72 cm	33 - 38 cm	7 mm	48 cm	80 mm	320 mm
Low Profile SIZE 1	40 - 46,5 cm	21 - 25 cm	8 mm	31 cm	63 mm	175 mm
Low Profile SIZE 2	46 - 55 cm	25 - 29 cm	8 mm	37,5 cm	80 mm	215 mm
Low Profile SIZE 3	54 - 63 cm	29 - 33 cm	8 mm	44 cm	80 mm	280 mm
Low Profile SIZE 4	62 - 72 cm	33 - 38 cm	8 mm	48 cm	80 mm	320 mm
Low Profile SIZE 5	71 - 81 cm	38 - 44 cm	8 mm	54 cm	90 mm	370 mm
Low Profile SIZE 6	80 - 90 cm	44 - 50 cm	8 mm	60 cm	100 mm	420 mm

*Size 1 cuffs that will accommodate sizes 2-4, 7mm uprights

Size	S.W.A.S.H CLASSIC		UPRIGHTS	
	PELVIC	CUFFS	115 Deg.	123 Deg.
1	28800 0001	28803 0001	28801 0001	28802 0001
1A*	N/A	28803 0015	N/A	N/A
2	28800 0002	28803 0002	28801 0002	28802 0002
3	28800 0003	28803 0003	28801 0003	28802 0003
4	28800 0004	28803 0004	28801 0004	28802 0004

Size	S.W.A.S.H LOW PROFILE		UPRIGHTS	
	PELVIC	CUFFS	115 Deg.	123 Deg.
1	28835 0001	28842 0001	28840 0001	28841 0001
2	28835 0002	28842 0002	28840 0002	28841 0002
3	28835 0003	28842 0003	28840 0003	28841 0003
4	28835 0004	28842 0004	28840 0004	28841 0004
5	28835 0005	28842 0005	28840 0005	28841 0005
6	28835 0006	28842 0006	28840 0006	28841 0006

Measurements

Pelvic Section

S.W.A.S.H Classic
Circumference at level of ASIS.

S.W.A.S.H Low Profile

Circumference between crest of ilium and ASIS.

Thigh Cuff

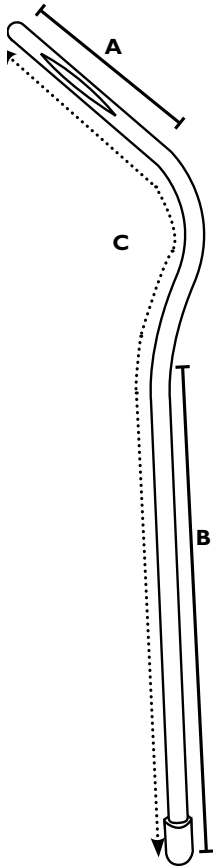
Circumference at distal thigh, just proximal to the condyles.

Uprights

Vertical from waist to mid-patella.

Assembly tools required.

Please refer to our *Clinical Manual* for assistance with sizing and fitting.

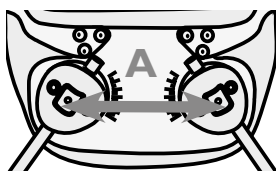
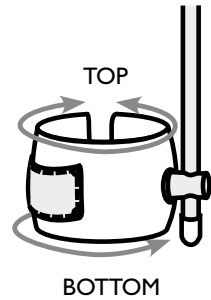


Upright lengths

Size	Proximal Length A, mm	Distal Length B, mm	Total Length C, mm
1	63	175	310
2	80	215	375
3	80	280	440
4	80	320	480
5	90	370	540
6	100	420	600

Plastic circumference

Size	Top in mm	Bottom in mm
1	230	210
2	270	250
3	310	290
4	360	340
5	390	370
6	460	420



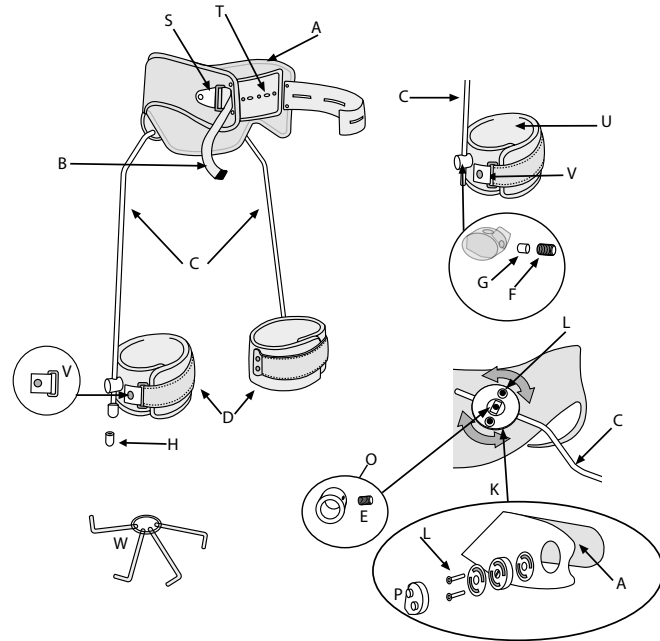
Pelvic Section - Distance Between Joint Centers

Size	Classic A, in mm	Low Profile A, in mm
1	82	82
2	90	90
3	105	105
4	120	120
5	N/A	130
6	N/A	150

Measurements are taken on flat plate before bending.

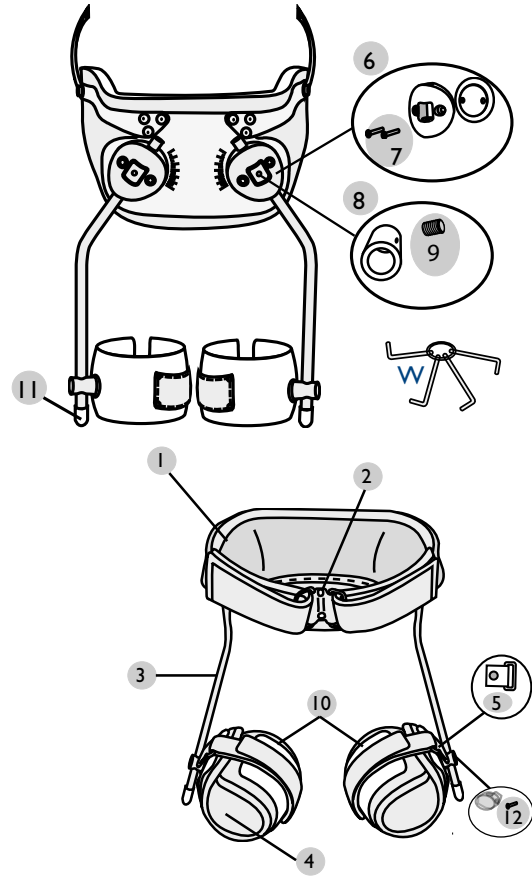
S.W.A.S.H.[®] Classic

28801	Uprights 115°	C, H, O
28802	Uprights 123°	C, H, O
28803	Thigh Cuffs w/padding	D
28804	Pelvic Padding	A
28805	Joint Set (1)	K
28806	Joint Cover (2)	P
28807	Clamp Ring for Uprights (2)	O
28808	Screw set	E, F, G, L
28809	Brass Bushings for Thigh Cuff (10)	G
28810	Slide buckle for waistband	S
28811	Waistband screw set	T
28812	Waistband webbing with snap (1)	B
28813	Rubber Stoppers, SZ 1 set/2, SZ 2-6 set/10	H
28814	Thigh Cuff Padding (2)	U
28815	Buckle with snap for Thigh Cuff (1)	V
28820	Allen key, set of 4	W



Low Profile II

28836	Pelvic Padding with Abdominal Pad	1, 2
28840	Uprights 115°	3, 8, 11
28841	Uprights 123°	3, 8, 11
28842	Thigh Cuffs w/padding	10
28843	Thigh Cuff padding (2)	4
28844	Joint set (2)	6, 8
28845	Screw set	7, 9, 12
28846/47	Abdominal Pad	2
28848	Clamp Ring Set	8
28849	Buckle with snap for Thigh Cuff (1)	5
28813	Rubber stoppers (2)	11
28820	Allen Key, set of 4	W



S.W.A.S.H. REPLACEMENT COMPONENTS

Item No.	Description	Item No.	Description
28804 0001	CLASSIC PELVIC PADDIDNG, SZ1	28836 0001	LOW PROFILE PELVIC PADDING, SZ1
28804 0002	CLASSIC PELVIC PADDIDNG, SZ2	28836 0002	LOW PROFILE PELVIC PADDING, SZ2
28804 0003	CLASSIC PELVIC PADDIDNG, SZ3	28836 0003	LOW PROFILE PELVIC PADDING, SZ3
28804 0004	CLASSIC PELVIC PADDIDNG, SZ4	28836 0004	LOW PROFILE PELVIC PADDING, SZ4
28805 0000	CLASSIC HIP JOINT SET FOR SZ 2,3,4, EA	28836 0005	LOW PROFILE PELVIC PADDING, SZ5
28805 0001	CLASSIC HIP JOINT SET FOR SZ 1, EA	28836 0006	LOW PROFILE PELVIC PADDING SZ6
28806 0000	CLASSIC JOINT COVER SET, SZ 2,3,4	28843 0001	LOW PROFILE THIGH CUFF PADDING,SET, SZ 1
28806 0001	CLASSIC JOINT COVER SET, SZ 1	28843 0002	LOW PROFILE THIGH CUFF PADDING, SZ 2
28807 0000	CLASSIC CLAMP RING SET SZ 2,3,4, PR	28843 0003	LOW PROFILE THIGH CUFF PADDING, SZ 3
28807 0001	CLASSIC CLAMP RING SET SZ 1, PR	28843 0004	LOW PROFILE THIGH CUFF PADDING, SZ 4
28808 0000	CLASSIC SCREW SET SZ 2,3,4	28843 0005	LOW PROFILE THIGH CUFF PADDING, SZ 5
28808 0001	CLASSIC SCREW SET FOR SZ 1	28843 0006	LOW PROFILE THIGH CUFF PADDING, SZ 6
28809 0000	CLASSIC BRASS BUSHINGS FOR THIGH CUFF/10	28844 0000	LOW PROFILE HIP JOINT, SET
28810 0001	CLASSIC WAISTBAND SLIDE BUCKLE SZ 1,2	28845 0000	LOW PROFILE HIP SCREW SET
28810 0003	CLASSIC WAISTBAND SLIDE BUCKLE SZ 3,4	28846 0001	LOW PROFILE ABDOMINAL PAD, SZ 1
28811 0000	CLASSIC WAISTBAND SCREW SET	28846 0002	LOW PROFILE ABDOMINAL PAD, SZ 2
28812 0001	CLASSIC WAISTBAND WEBBING WITH SNAP SZ 1,2	28846 0003	LOW PROFILE ABDOMINAL PAD, SZ 3
28812 0003	CLASSIC WAISTBAND WEBBINGWITH SNAP SZ 3,4	28847 0004	LOW PROFILE ABDOMINAL PAD, SZ 4
28813 0000	RUBBER UPRIGHT TIPS, SZ 2,3,4 SET/10	28847 0005	LOW PROFILE ABDOMINAL PAD, SZ 5
28813 0001	CLASSIC RUBBER UPRIGHT TIPS, SZ 1, SET/2	28847 0006	LOW PROFILE ABDOMINAL PAD, SZ 6
28814 0001	CLASSIC THIGH CUFF PADDING SET, SZ 1	28848 0000	LOW PROFILE HIP CLAMP RING SET, PR
28814 0002	CLASSIC THIGH CUFF PADDING SET, SZ 2	28849 0001	LOW PROFILE BUCKLE WITH SNAP, SZ 1,2 - EACH
28814 0003	CLASSIC THIGH CUFF PADDING SET, SZ 3	28849 0003	LOW PROFILE BUCKLE WITH SNAP, SZ 3,4 - EACH
28814 0004	CLASSIC THIGH CUFF PADDING SET, SZ 4		
28815 0001	CLASSIC BUCKLE WITH SNAP SZ 1,2 - EACH		
28815 0003	CLASSIC BUCKLE WITH SNAP SZ 3,4 - EACH		
28820 0000	ALLEN KEYS, SET OF 4		